

Findings from WASH FIT status report

22nd January 2025



Implementation of the water and sanitation
for health facility improvement tool
(WASH FIT): global report



Agenda

Introduction

Ryan Cronk (UNC)

Findings from status report: Q&A

John Brogan (Helvetas/Swiss Water and Sanitation Consortium) & Arabella Hayter (WHO)

Country reflections (Benin & Nepal)

Alice Chabi Guiya, Nim'Dora Project Coordinator, Helvetas Benin

Dr Upendra Dhungana, Ministry of Health, Nepal

WHO Academy WASH FIT training package

Arabella Hayter (WHO)

Discussion

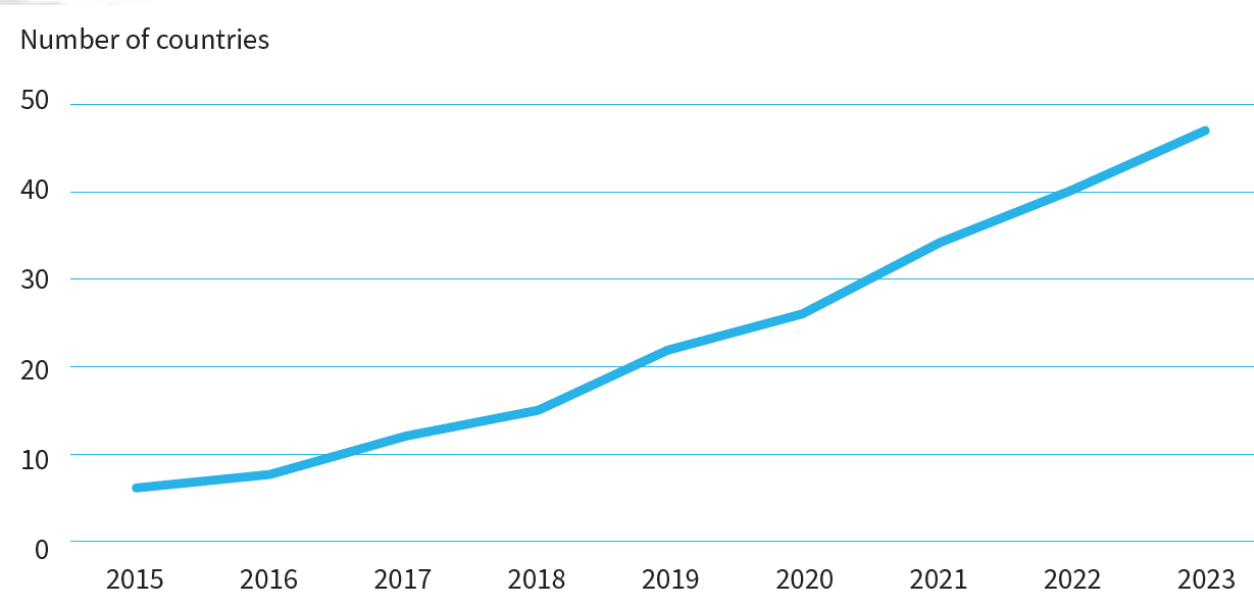
Conclusions

UNC

71 countries



■ Responded to survey ■ Other source



Angola, Bahrain, Bangladesh, Belize, Benin, Bhutan, Burkina Faso, Cambodia, Chad, Comoros, Djibouti, Democratic Republic of the Congo, Ecuador, Egypt, Eswatini, Ethiopia, Fiji, Gambia (Republic of the), Georgia, Ghana, Guinea, Haiti, India, Indonesia, Iraq, Jamaica, Jordan, Kazakhstan, Kenya, Lao People's Democratic Republic, Lebanon, Lesotho, Liberia, Madagascar, Malawi, Maldives, Mali, Montenegro, Mozambique, Myanmar, Namibia, Nepal, Niger, Nigeria, Pakistan, occupied Palestinian territory, Papua New Guinea, Peru, Philippines, Qatar, Rwanda, Saudi Arabia, Senegal, Sierra Leone, Somalia, South Africa, Sudan, Sri Lanka, Syrian Arab Republic, Tajikistan, Togo, Tunisia, Uganda, Ukraine, United Republic of Tanzania, Vanuatu, Venezuela, Viet Nam, Yemen, Zambia, Zimbabwe.

Country insights and applications

Country	Focus
Bangladesh	Implementation of WASH FIT with a focus on systems strengthening and climate in Bangladesh
Burkina Faso	Evaluation of WASH FIT in Burkina Faso
Georgia	WASH FIT is part of continuing medical education curriculum for family doctors in Georgia
Indonesia	Nationally accredited training package in Indonesia Over 13 000 Indonesian facilities using national data collection portal Using WASH FIT to make facilities more accessible in Indonesia
Lao People's Democratic Republic	Integration with a national climate initiative provides a means of scaling up in Lao People's Democratic Republic
Lebanon	Using WASH FIT to assess and improve cholera treatment centres in Lebanon
Middle East	Regional data sharing using online dashboards in the Middle East Use of the dashboard to raise awareness of GEDSI in the Middle East
Montenegro	Use of WASH FIT as an advocacy tool in PHC facilities in Montenegro
Mozambique	Scale-up and institutionalization in Mozambique
Nepal	Motivation of cleaning staff and evaluation of WASH FIT outcomes in Nepal
Philippines	Adaptation and national adoption of WASH FIT in the Philippines, with a focus on climate resilience
Ukraine	Integrating WASH and IPC in Ukraine shows that small improvements catalyse larger improvements, even in wartime
Venezuela	Electronic data collection and visualization in Venezuela used as an advocacy tool
Zimbabwe	Costing of WASH FIT in Zimbabwe: the power of data for advocacy and investment

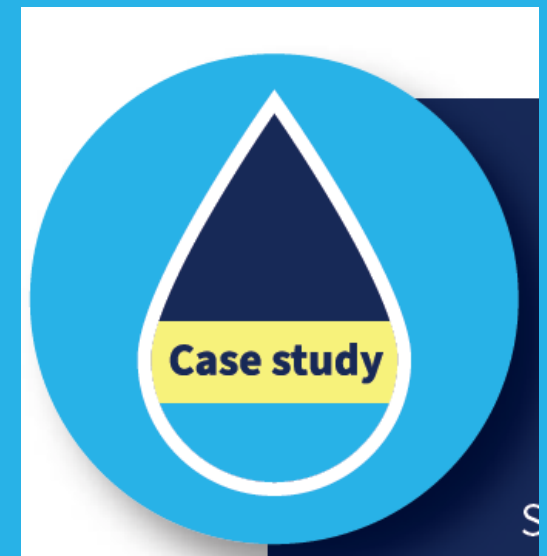
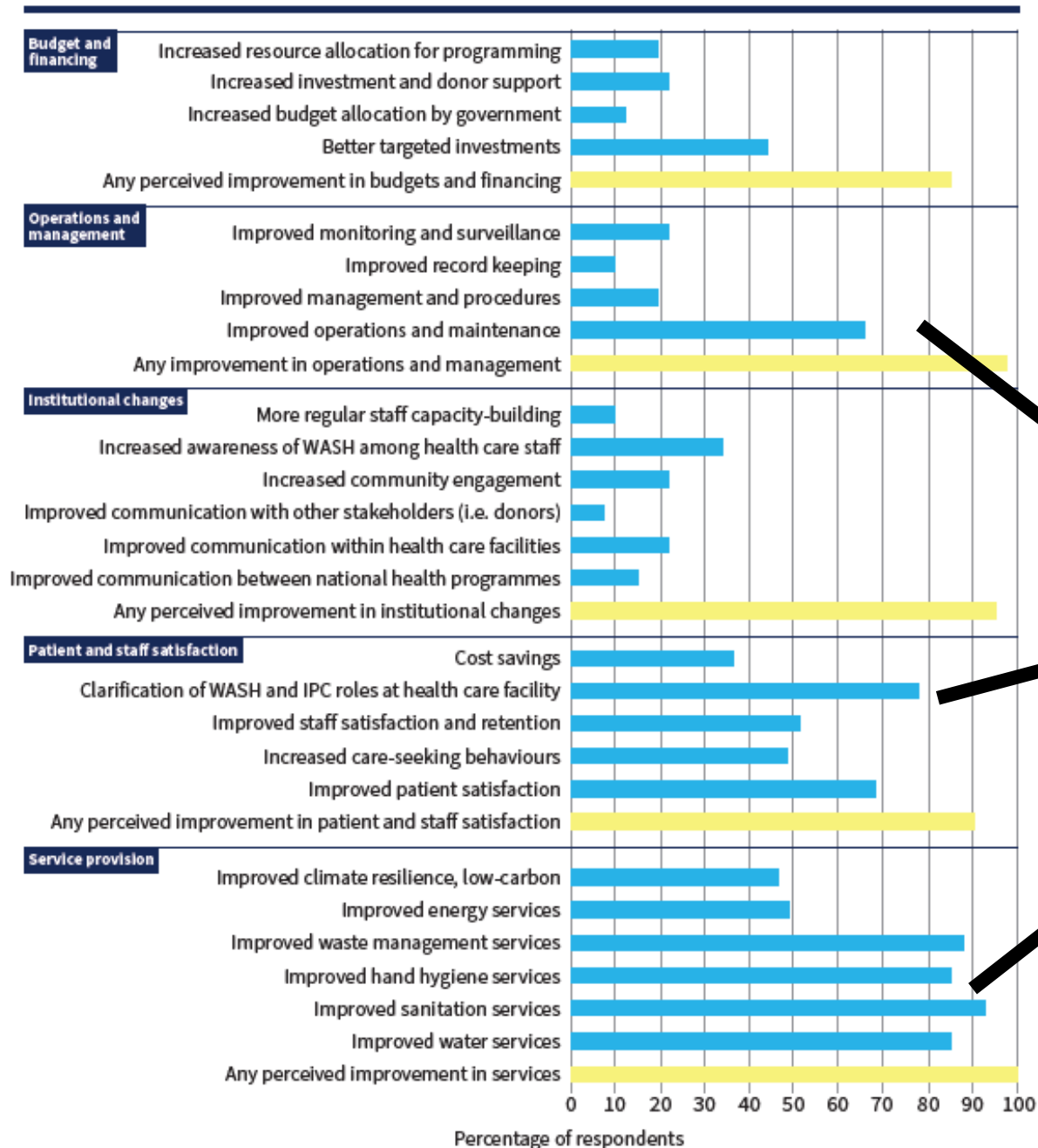


Figure 5. Perceived improvements due to WASH FIT



WASH FIT resulted in

> 65% improving operation and maintenance

> 50% improving staff satisfaction

~ 60% improving patient satisfaction

> 80% improving WASH services

Key recommendations

- More efforts needed to institutionalize WASH FIT in government and health programmes
- Greater operational monitoring and real-time sharing and adjustments needed
- Financing and funding for implementation and scale-up should be planned for and engage local municipalities
- Streamlining with health, energy and climate tools and approaches important for more effective use of resources and realizing co-benefits
- Climate, gender, disability and equity experts and stakeholders should be engaged throughout the process
- In emergencies, WASH FIT should (and can) be abbreviated

WASH FIT & the 8 Practical Steps

1 CONDUCT
SITUATION
ANALYSIS AND
ASSESSMENT



2 SET TARGETS
AND DEFINE
ROADMAP



3 ESTABLISH NATIONAL
STANDARDS AND
ACCOUNTABILITY
MECHANISMS



4 IMPROVE
INFRASTRUCTURE
AND MAINTENANCE



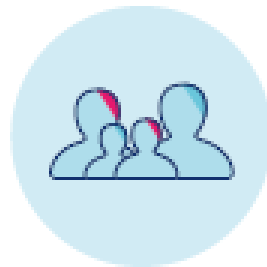
5 MONITOR
AND REVIEW
DATA



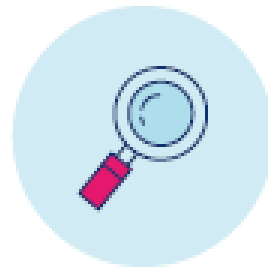
6 DEVELOP
HEALTH
WORKFORCE



7 ENGAGE
COMMUNITIES



8 CONDUCT
OPERATIONAL
RESEARCH AND
SHARE LEARNING



EXPERIENCE WASH FIT AU BENIN

Alice CHABI GUIYA
Coordonnatrice NimDora

Webinaire du 22/01/2025



Swiss Water & Sanitation Consortium

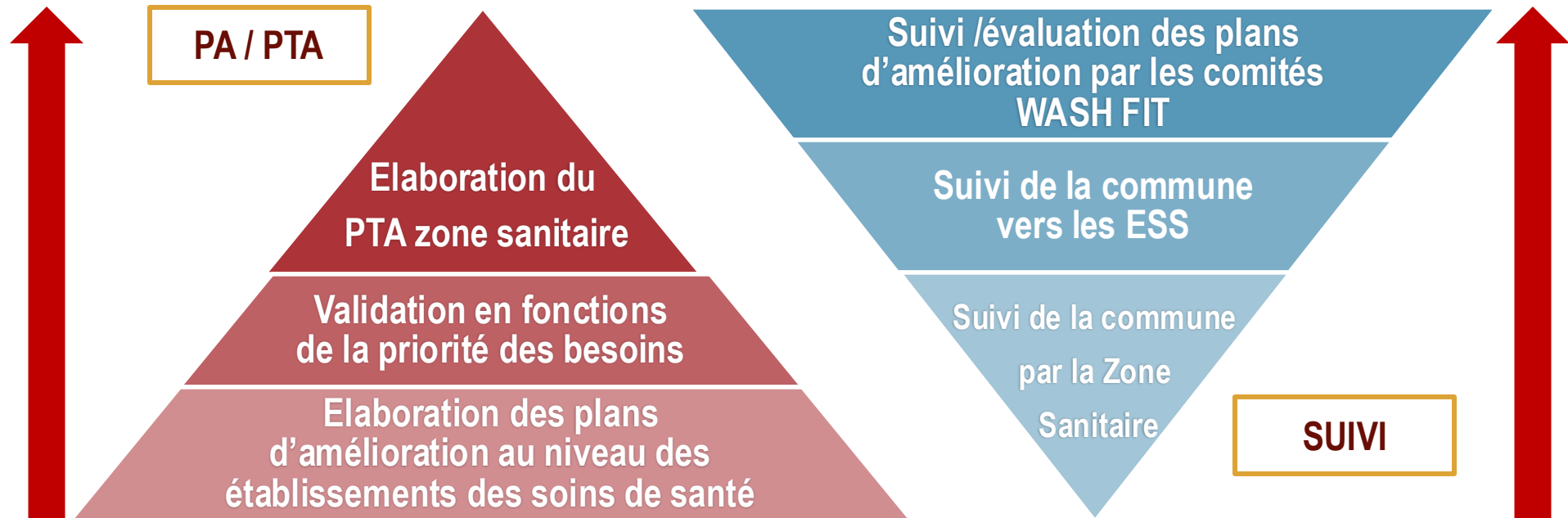


Différents niveaux de suivi selon la pyramide sanitaire

- **Niveau central:** Ministère de la santé à travers la direction de la santé communautaire, de l'hygiène et l'assainissement de base
- **Niveau déconcentré:** Direction départementale de la santé
- **Niveau décentralisé:** Zone sanitaire

WASH FIT dans les processus de planning et de suivi

Processus de suivi de la zone sanitaire – Plan d'Amélioration / Plan de Travail Annuel



Learnings from WASH in HCF



Upendra Dhungana
Sr. Public Health Administrator
Ministry of Health and Population, Nepal

Recommendations

- Training should be accompanied by resources and a plan to support implementation and operational monitoring
- Financing and funding should be planned for and include local engagement of municipalities

Training and meetings

- A key for learning tools and skill undertaking assessment and prioritizing the gaps in WASH in HCF
- The training with the outputs: action plan useful for findings and negotiating funds
- Follow up of the training and improved action plan
- Repair and maintenance training within facility or in the community equipped with tools
- Regular team meeting – important to institutionalise WASH FIT .



National WASH FIT TOT

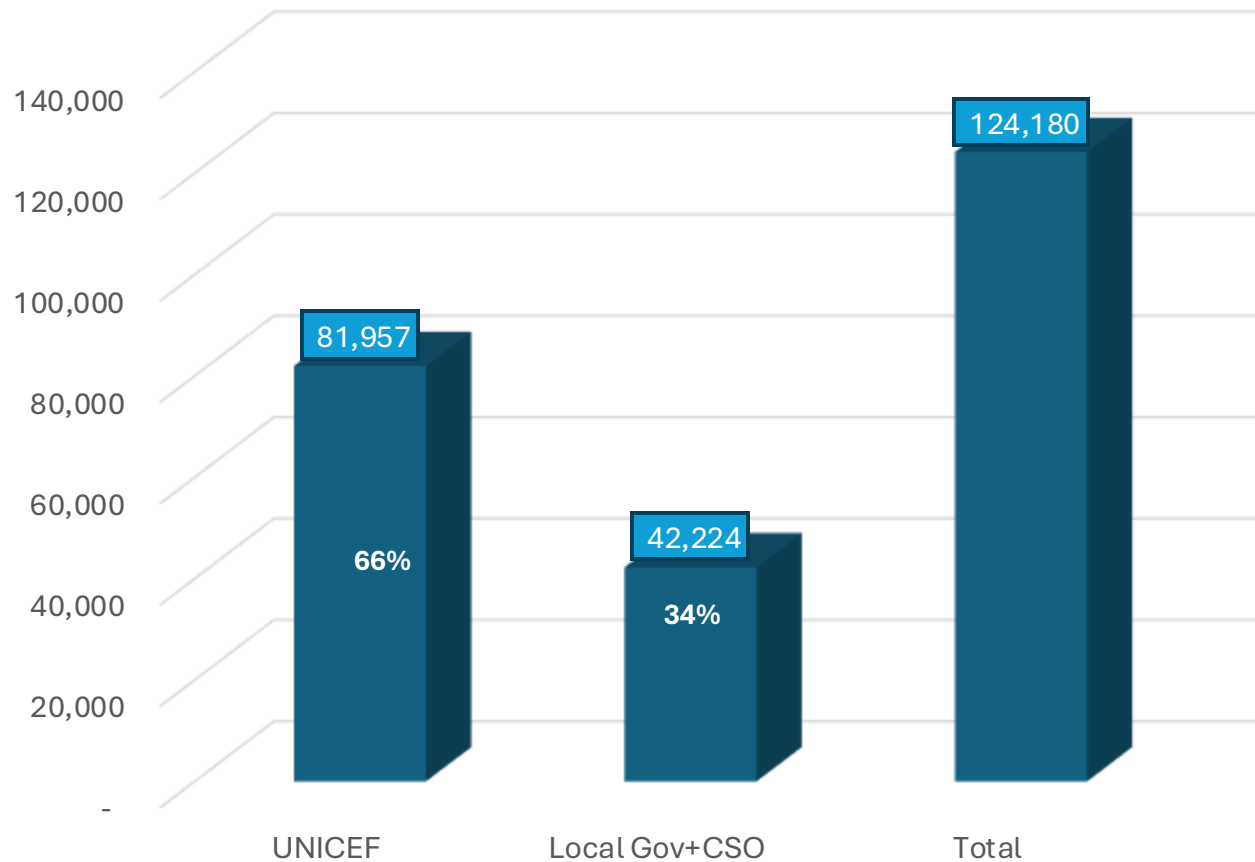


WASH FIT Team meeting with partner



Deep cleaning training

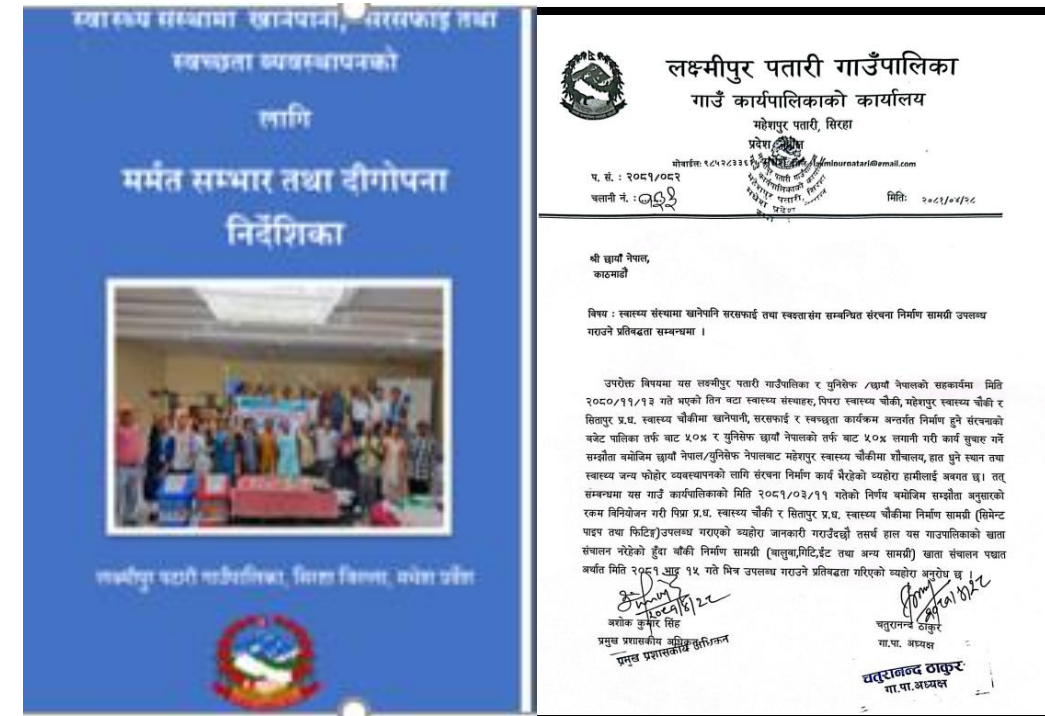
Funding for WinHCF (10 HCF)



Budgeting and advocacy to improve water, sanitation, and hygiene in healthcare facilities: a case study in Nepal

Authors: Laxman Kharal Chetry,¹ Prakash Bohara,¹ Ramesh C. Bohara,² Ram Hari Jajal,³ Sarad Khadha,⁴ Hari Subedi,⁴ Debesh Giri,⁴ Sarbesh Sharma,⁵ Upendra Dhungana,⁵ Matteus Thijs van der Valen,⁶ John Brogan,⁶ Darcy M. Anderson⁷

A municipality established recovery fund of USD 3831 for O&M of WASH services





स्वास्थ्य संस्थाहरूमा सुरक्षित रूपमा व्यवस्थित र जलवायु अनुकूलित खानेपानी, सरसफाइ र स्वस्थता प्राप्त गर्न प्राविधिक सहयोग कार्यक्रम 'Technical Support to Provide Safely Managed Water, Sanitation & Hygiene (WASH) Services in Health Care Facilities' को समापन कार्यक्रम, छायाँ नेपाल र नगरपालिकाको संयुक्त सहकार्यमा संचालित कार्यक्रमको मधेश प्रदेशको 'समापन कार्यक्रम' को आयोजना गरी समापन गरिएको हो ।

यसमा विशेष गरी वास फिट टूलको प्रयोग गरी स्वास्थ्य संस्थाहरूमा खानेपानी, सरसफाइ तथा स्वस्थता अन्तरलाई पहिचान गरी अपांग, लैंगिक तथा बालमैत्री खानेपानी, हात धुने स्थान, शौचावास तथा स्वास्थ्य संस्थाजन्य फोहोर व्यवस्थापन कार्य गरिएको छाँया नेपालका परियोजना प्रबन्धक राम मण्डलको अध्यक्षतामा भएको समीक्षा गर्दै सक्रिय तथा सञ्चालनमा उत्कृष्ट भूमिका खेलेका संस्थाहरूलाई पुरस्कृत गरिएको थियो । जसमा पहिलो बागमती नगरपालिकाका कर्मैया स्वास्थ्य चौकी, मिर्चैया नगरपालिकाको मिर्चैया अस्पताल र तेस्रो स्थान लहान प्रादेशिक अस्पताल लहानले प्राप्त गरेका थिए ।

स्वास्थ्य संस्थाहरूमा जलवायु अनुकूलित खानेपानी, सरसफाइ तथा स्वच्छता कार्यक्रमको समापन - WASHKhabar

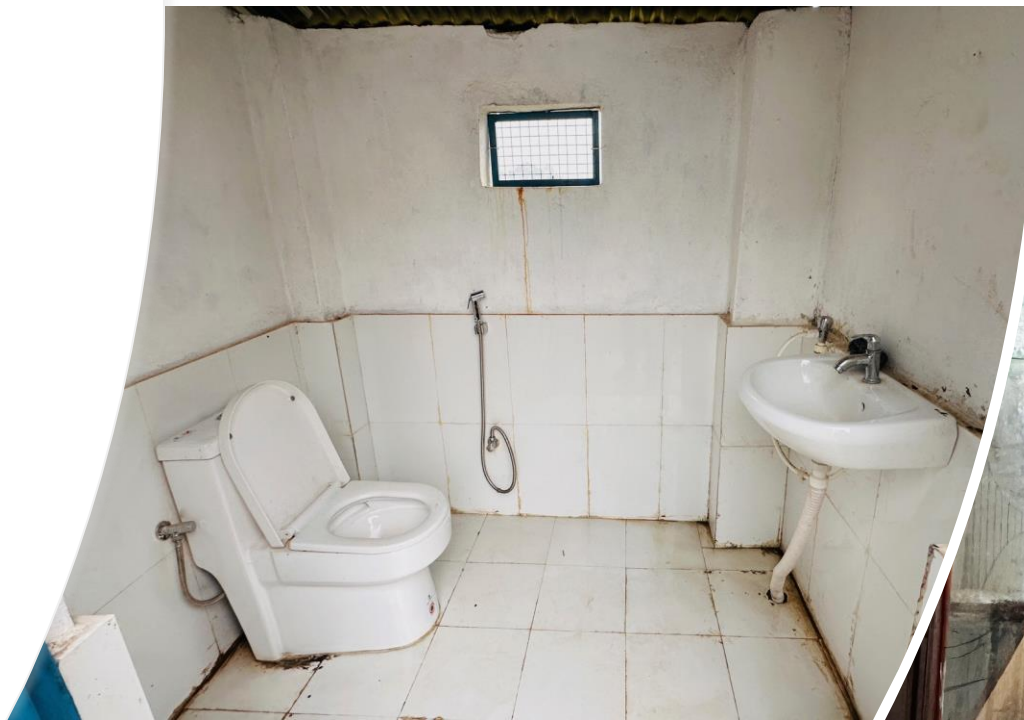


Reward, Recognition and Review (3R)

- **Reward and recognition is a key factor for motivation and healthy competition,**
- **Reward system contributes a lot for making the WASH services functional.** During the monitoring/assessment time from the Province for selecting best performed HCF, we found well functional WASH services.
- **Review (at least annual) system trigger to the HCF chief** which is key for the programme ownership and sustainability.



Thank you



Implementation of the water and sanitation
for health facility improvement tool
(WASH FIT): global report

Experiences from Nepal

Dr Upendra Dhungana
Ministry of Health



Implementation of the water and sanitation
for health facility improvement tool
(WASH FIT): global report

Discussion





WASH FIT online training package

Now on WHO Academy (previously on OpenWHO)
16 modules (WASH FIT process + technical modules)
Provides foundational knowledge on tool prior to in person learning
3-4 hrs self-learning
English only (for now)

- 7,000 enrollees since September 2024
- Mostly African region
- Majority from Ministries of health, NGOs
- 70% respondents said “highly applicable” to their work
- 85% would recommend course to others



**Water and Sanitation
for Health Facility
Improvement tool
(WASH FIT) for improved
quality of care**

Sign up at: <https://web-staging.lxp.academy.who.int/>